



FIREHOUSE MINISTRIES

\$7.8 Million Capital Campaign

A Necessity to Revitalize Birmingham

Birmingham is facing a growing humanitarian crisis – homelessness. The growth of our city must include more than condos, greenspaces and restaurants. Your investment will help us revitalize people's lives in a real and lasting way.

FIREHOUSE MINISTRIES SERVES more chronically homeless men than any agency in the state of Alabama. Founded 33 years ago, we operate the broadest, most comprehensive continuum of services for Birmingham's homeless. Meals, street outreach, employment readiness workshops, literacy skills, Bible studies, legal assistance, life skills training, and a clothing closet is offered to thousands of our city's most desperate citizens. Firehouse Ministries provides housing for homeless men with **218 beds at 7 sites** throughout the city of Birmingham.

The revitalization of Birmingham is amazing. We're seeing new parks, landmark buildings remodeled, a growth of multi-use properties and new trendy dining venues. But what many don't want to see in the middle of this renaissance are the homeless. Our homegrown humanitarian crisis reflects the fragility of our own good fortunes and a necessity to exercise the compassion many of us hold as a part of our faith.

Centralized services is paramount to making a positive impact on our vulnerable population. But the gentrification of downtown Birmingham is pushing service providers further out. Firehouse Ministries is committed to remain in downtown Birmingham and to expand our services to better meet our client's needs.

There is also an upsurge in homelessness that includes youth who have aged out of the foster care system, veterans who have had inadequate care, men who have suffered

personal financial or social catastrophic circumstances, people with mental illness and seniors who are incapable of securing for their own care. The result is residents who perceive the homeless as a threat, businesses who see only a financial detriment and civic governments that enact laws criminalizing people for trying to address fundamental human needs.

Our 110 year old facility is inadequate to accommodate the complex needs of people experiencing homelessness and its limitations renders Firehouse Ministries incapable of fully delivering on our mission to restore dignity, respect and hope. It is difficult for a person to feel dignified when they are required to wait lined up outdoors in the elements to receive necessary services.

This new facility will help us expand upon the continuum of community care we already provide. The design is founded on functionality, cleanliness and adaptability.

It will allow us to expand and better personalize the care we offer our guest.

The design includes expanded general population capacity to 75, late entry intake for the working homeless, wet housing for people with chronic substance issues, class rooms and case management areas in addition to a lobby so our clients will no longer be required to wait for admittance in heat, cold, rain or snow. A chapel will allow for a diversity of faith-based organizations to minister based upon the spiritual needs of the guests. Youth housing will allow us to create a safe environment for clients ages 18-24 separate from the general population. Safe Havens will also move on site, offering higher levels of community integration for this vulnerable population.

Committed to serving the needs of those who are least among us, we strongly support the planned construction of a new facility to provide comprehensive services to men struggling to find food, shelter and jobs in our community. Pope Francis has recently encouraged Catholic Bishops across the world to help build structural works of mercy in their dioceses. I would be most pleased to see this construction begin during this Jubilee Year of Mercy.

You help us restore dignity, respect and hope to all who enter our doors. Because of you, we are able to provide chronically homeless men in the Birmingham area a nurturing and caring environment while empowering each individual to reach his full potential.

THE CITY OF BIRMINGHAM is committed to improving the lives of all of its citizens. And to that end, has pledged \$1 million dollars to the construction of a new Firehouse Shelter in the downtown area.

BISHOP BAKER
Catholic Diocese of Birmingham
in Alabama

Our Current Capabilities

Firehouse Ministries serves more chronically homeless men than any agency in the state of Alabama. Founded 33 years ago, we operate the broadest, most comprehensive continuum of services for Birmingham's homeless.

Meals, street outreach, employment readiness workshops, literacy skills, Bible studies, legal assistance, life skills training, and a clothing closet is offered to thousands of our city's most desperate citizens. Firehouse Ministries provides housing for homeless men with **218 beds at 7 sites** throughout the city of Birmingham. But our main facility, which is more than 100 years old, is inadequate and prohibits us from fully achieving our mission. The building is difficult to keep clean and sanitary. Steep narrow stairs are not ADA compliant. And, the limited space is not conducive to the programs we offer.

NASHAMAH TRANSITIONAL HOUSING

Transitional housing program assists men with housing and on-site case management, employment, education, and life skills assistance.

SAFE HAVEN

We partner with area mental health agencies to offer permanent supportive housing to men with mental illness. We provide stable housing, food and professional case management services. It is the *only* Alabama program to offer uninterrupted around-the-clock services to men with documented serious mental illness.

PERMANENT SUPPORTIVE HOUSING

The Center Point facility provides permanent housing and professional case management services. Our programs follow the **Housing First** approach, quickly and successfully connecting individuals and families experiencing homelessness to permanent housing. Supportive services are offered to maximize housing stability and prevent returns to homelessness as opposed to addressing predetermined treatment goals prior to permanent housing entry.

LOW INCOME HOUSING

The Cooperative Downtown Ministries apartments in Fountain Heights provide a low income option for men and women.

THE EMERGENCY SHELTER

We are the only Birmingham program that does not put a limit on the number of nights a man can stay in our shelter. Every day we serve lunch to members of the community who are hungry including men, women and children. Every night we offer shelter for 50 to 70 during inclement weather.

STOP

The Street Outreach Program offers front-line assistance to any person or family that is homeless. We provide case management on the street and deliver food, clothing, blankets, and hygiene packets, as well as transportation to warming stations.

THE TEAM

Alabama's *first* and *only* pre-treatment program to prepare guests for entrance into a rehabilitation program.

THE DAY SHELTER

Homeless men have an opportunity to shower, shave, do their laundry, check mail and store their belongings in a locker every day. A light meal is served five days per week.

THE DAY PROGRAM

Education and the development of crucial life skills is a necessity for Birmingham's homeless men to reach their full potential. Conducted by volunteers, this program helps men sustain stable housing in our community.

PROJECT HELP

Through the Homeless Experience Legal Protection, 10-12 Birmingham law firms and Legal Services of Alabama offer year-round pro bono legal services (up to three times per month).

OTHER SERVICES

Pet program: Companion animals can be a vital part in the life of the homeless. We provide pet food to help maintain the well-being of the animal so the individual can focus on their own well-being.

NA groups: We provide space for (3) three sanctioned meetings each week.

Volunteer opportunities: There are many ways for an individual, group or company to get involved.

Supervised gym membership:

Access to a gym assists our guests in getting physically healthy.



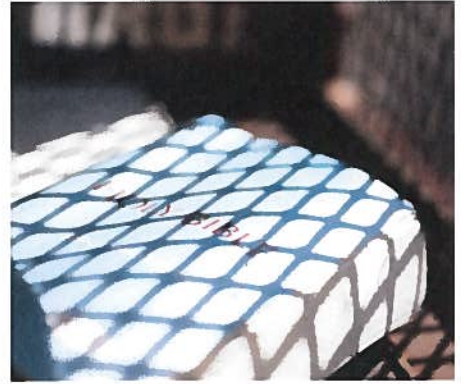
With your help, our new facility will allow us to better serve our community in crisis. Design Poole & Co. Architects.

Help us restore dignity, respect and hope.



**FIREHOUSE
MINISTRIES**

Our 110 year old facility is inadequate to accommodate the complex needs of people experiencing homelessness and its limitations renders Firehouse Ministries incapable of fully delivering on our mission to restore dignity, respect and hope.



Design Poole & Co. Architects.

With your help, our new facility will allow us to better serve our community in crisis.
Please contact: **Anne Wright: 205/252.9576 FirehouseShelter.com**

New Facility Design is Functional & Adaptive

Our success is dependent upon being able to expand our scope of services, serve a growing population of people in crisis and adapt to changing needs.

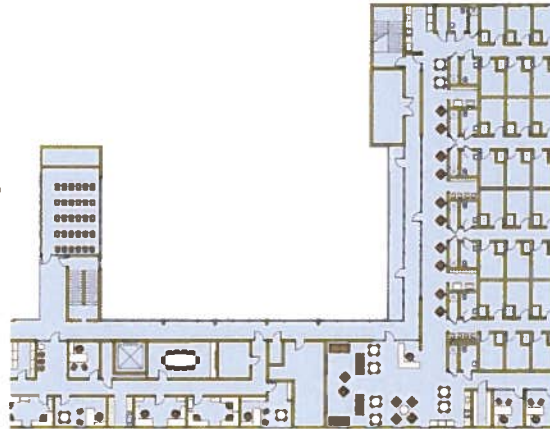
2 Second Floor

Chapel & Meditation:

A non-denominational space for ministry, prayer, meditation and contemplation.

Administration:

On-site offices for management and staff.



Safe Haven: 24 single occupancy dorm-style rooms for men with mental illness

Youth Space: 6 beds - safe space for 18-24 year olds - facilitates getting them off the streets and back on the right track quickly.

Additional Features:

Red bricks incorporated into the architecture acknowledge the humble beginnings of FireHouse Ministries. Windows provide lots of natural light, essential to the well-being of men who spend a majority of their time outdoors. A well-lit basketball court provides physical activity and recreation.

Clothing Closet & Laundry:

storage for clean and dirty clothes, and a room for belongings that heats to kill germs and pests on bags and possessions. Also storage for guests' large items.

1 First Floor

Lobby: A place that restores dignity when waiting to check in. Includes library and comfortable, clean seating—no waiting outside. Facility is ADA compliant and built sturdy to avoid damage.

Courtyard & Greenspace:

Safe and semi-secluded includes tables and a garden area out of sight of passing traffic. Property also includes outdoor recreation space.

Street Outreach Offices:

GED classrooms, medical space and meeting rooms for volunteers.

Kitchen: Enclosed and climate controlled, clients will no longer have to wait in sweltering heat or freezing rain for admittance.

Commons: Day shelter & cafeteria accommodates 150.



Main Dormitory:

79 bunks partitioned with a half wall to provide privacy. Floor is slanted with drains to provide excellent cleaning accessibility. Lockers are provided so the men can keep their valuables safe.

Bathroom & Shower Facilities:

ADA compliant and positioned where noise will not bother sleeping guests.

Wet Entry: Federal funding guidelines encourage the ability to admit persons who are at high-risk of exposure especially during sub-freezing weather. Separate accommodations prevent unnecessary disturbances to the general population.

Late Entry: provides working poor with a bed without waking other guests.

Classrooms & Meeting Space:

A multi-use facility space for continuing education, job skills, presentations from social service providers and more.

2015 Results & Actions

The Firehouse Shelter does an absolutely amazing job supporting and transforming the lives of good people who have fallen on hard times. The Shelter's impact will be magnified with a new facility which will not only improve lives but add to the development of the city center.

CHIEF A. C. ROPER
Birmingham Police Dept



4,037
PEOPLE SERVED

Men: **2,956**; Women: **704**
Transgendered: **5**; Adult Unknown: **22**
Boys: **69**; Girls: **61**; Child Unknown: **2**
Age Unknown: **217**



OF EVERY DONATED
DOLLAR
93%
GOES DIRECTLY
TO PROGRAMS
THAT EMPOWER
GUESTS
TO END THEIR
HOMELESSNESS

 **Veterans: 465**

 **114,000** MEALS SERVED

	59 TRANSITIONAL HOUSING	24 SUPPORTIVE HOUSING WITH MENTAL CARE	62 PERMANENT HOUSING AND CASE MGMT.
---	-----------------------------------	--	---

Highest Contributing Donors

Ruby and John Ansley Fund
Canterbury United Methodist Church
Bill McDonald
St. Luke's Episcopal Church
Protective Life Foundation

Protective Life Corp
Dunn Building Co.
Church of the Highlands
Mike Luce

Without you, we would not be able to touch the lives of Birmingham's most vulnerable population. Without you, we would not be able to lift men off the streets. Without you, we would not be able to create positive change in so many people's lives.

But with you, we can. We restore dignity, respect and hope. With you, we are a shining light in the darkness. The last hope for many.



With your help, we can alleviate homelessness for many.

You have an opportunity to revitalize someone's life. To invest in your community, please contact:

FirehouseShelter.com
Anne Wright: 205/252.9576